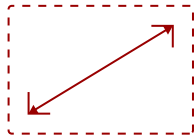


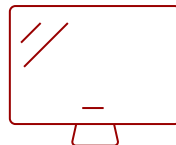
VA2215-H

## Key Features

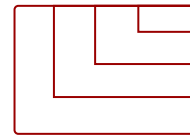
- Frameless Design
- HDMI Cable in Every Box
- Incredible Screen Performance
- Adaptive Sync



22  
**DISPLAY**



MVA  
**PANEL**



1920x1080  
**RESOLUTION**

## Product Description

With flexible connectivity, wide-angle viewing, and amazing screen performance, the ViewSonic® VA2215-h delivers solid multimedia features and a sleek design at a great value. Featuring frameless MVA panel technology, the VA2215-h delivers stunning brightness and contrast at nearly any viewing angle. A minimalist design, edge-to-edge screen, and frameless bezel make this an ideal monitor for nearly seamless multi-screen setups. Whether for working at the office, or enjoying entertainment at home, the VA2215-h features an HDMI port and an included HDMI cable for flexible connectivity to PCs, laptops and gaming consoles. A three-year limited warranty, along with one of the industry's best pixel performance policies, makes the VA2215-h a great overall value choice.

## Specifications

### More Information

<b>Screen Size</b>	22
<b>Viewable Area (in.)</b>	21.5
<b>Panel Type</b>	MVA

<b>Display Resolution</b>	1920 x 1080
<b>Display Resolution</b>	Full HD (1920x1080)
<b>Static Contrast Ratio</b>	3,000:1
<b>Dynamic Contrast Ratio</b>	50,000,000:1
<b>Light Source</b>	LED
<b>Brightness</b>	250 cd/m2
<b>Colors</b>	16.7M
<b>Color Space Support</b>	8 bit true
<b>Aspect Ratio</b>	16:9
<b>Response Time (GTG w/OD)</b>	5ms
<b>Viewing Angles</b>	178° horizontal, 178° vertical
<b>Backlight Life (Hours)</b>	30,000
<b>Panel Surface</b>	Anti-glare, Hard coating (3H)
<b>Refresh Rate</b>	75Hz
<b>PC Resolution (max)</b>	1920x1080
<b>Mac® Resolution (max)</b>	1920x1080
<b>3.5mm Audio Out</b>	1
<b>VGA</b>	1
<b>HDMI 1.4 In</b>	1
<b>Eco Mode (Conserve)</b>	13W
<b>Eco Mode (optimized)</b>	15W
<b>Consumption (typical)</b>	20W
<b>Consumption (max)</b>	21W
<b>Voltage</b>	100-240 VAC, 50-60Hz
<b>Stand-by</b>	0.5W
<b>Power Supply</b>	External
<b>Cable Organization</b>	No
<b>Kensington Lock Slot</b>	1
<b>Physical Controls</b>	U, R, D, L, EN (power)
<b>On Screen Display</b>	Input Select, Audio Adjust, ViewMode, Color Adjust, Manual Image Adjust, Setup Menu
<b>Temperature</b>	32-104° F (0 - 40° C)
<b>Humidity (non-condensing)</b>	20-90%
<b>VESA Compatible</b>	75 x 75 mm
<b>Frequency Horizontal</b>	24 ~ 86KHz
<b>Frequency Vertical</b>	48 ~ 75Hz
<b>Tilt (Forward/Back)</b>	5° / 20°

<b>Net (lbs)</b>	5.3
<b>Net Without Stand (lbs)</b>	4.4
<b>Gross (lbs)</b>	7.7
<b>Net (kg)</b>	2.4
<b>Net Without Stand (kg)</b>	2.0
<b>Gross (kg)</b>	3.5
<b>Packaging (in.)</b>	22.4 x 15.1 x 4.6
<b>Physical (in.)</b>	19.4 x 14.8 x 7.4
<b>Physical Without Stand (in.)</b>	19.4 x 11.1 x 1.5
<b>Packaging (mm)</b>	570.0 x 383.0 x 118.0
<b>Physical (mm)</b>	492.0 x 377.0 x 188.0
<b>Physical Without Stand (mm)</b>	492.0 x 282.0 x 38.0
<b>Regulations</b>	RoHS, WEEE, BSMI, VCCI, PSE
<b>PACKAGE CONTENTS</b>	VA2215-H x1, HDMI Cable (v1.4; Male-Male) x1, AC/DC Adapter x1, Quick Start Guide x1
<b>Recycle/Disposal</b>	Please dispose of in accordance with local, state or federal laws.

UPC: 766907014150

