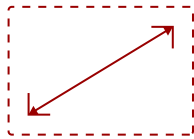


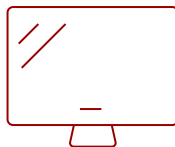
IFP7550 - 75" 4K TOUCH ENABLED VIEWBOARD SMART DISPLAY

Key Features

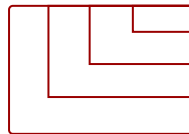
- **ULTRA HD RESOLUTION:** 75 Inch 4K Ultra HD (3840x2160p) interactive display
- **ADVANCED TOUCH:** 20-point multi-touch lets users write on the display with their fingers and stylus pens
- **INTEGRATED SOFTWARE:** The myViewBoard suite includes Whiteboard, ViewBoard Cast, and more for better engagement
- **BETTER SOUND:** Built-in 45W stereo soundbar delivers optimal sound
- **FLEXIBLE CONNECTIVITY:** Powerful quad-core processor and versatile connectivity options (HDMI,VGA, RJ45, and USB ports)
- **REMOTE MANAGEMENT:** Schedule updates and monitor device status with the built-in myViewBoard® Manager software
- **PEACE OF MIND:** Industry-leading 3-year standard warranty with optional extensions and robust support services



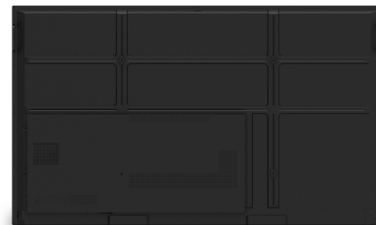
75
DISPLAY



PANEL



RESOLUTION



Product Description

Featuring 4K Ultra HD resolution and an advanced, next-generation touchscreen, the ViewSonic® ViewBoard® IFP7550 delivers incredible collaborative capabilities for 21st century boardrooms and classrooms. With integrated myViewBoard® annotation software and ViewBoard Cast streaming software, content creation and sharing has never been easier. What's more, this ENERGY STAR certified display delivers optional slot-in PC capability for more computing-intensive interactive applications. A VESA-compatible design allows for installation on a wall mount, or on an optional trolley cart for more flexible installation in classrooms and meeting rooms.

Specifications

More Information

UPC

766907002478

OS	ViewBoard OS (embedded Android 8)
GPU	ARM Mali-G51
CPU	ARM Quad Core A73 + A53
CPU Processor Speed	A73: 1.1GHz, A53: 1.5GHz
Memory	3GB
Storage	32GB
Internal Speakers	10W (x2)
Subwoofer	15W (x1)
HDMI 2.0 In	3
VGA	1
3.5mm Audio In	1
3.5mm Audio Out	1
SPDIF Audio Out	1
USB 3.0	4
USB 2.0	3
Slot-in PC Slot	1
USB B Touch Port	2
RS232	1
Ethernet LAN (RJ45)	1
WIFI Module Slot	1
Intel® OPS Slot In (80-pin)	1
Voltage	100-240 VAC
Consumption (typical)	138W
Stand-by	<0.5W
On Screen Display	Input, Volume, Backlight, Audio, Screen, Display, Adjust
Temperature	32-104° F (0 - 40° C)
Humidity (non-condensing)	10-90%
Touch Technology	Slim IR
Touch Points	Windows: 20, Android: 20
Tip Detection	Dual tips, 3mm and 8mm
Net (lbs)	118.8
Gross (lbs)	158.5
Net (kg)	53.89
Gross (kg)	71.90
Packaging (in.)	76.0 x 44.9 x 11.0
Physical (in.)	67.3 x 40.2 x 3.5

Packaging (mm)	1930.0 x 1140.0 x 280.0
Physical (mm)	1710.0 x 1020.0 x 90.0
VESA Compatible	800 x 400 mm
Warranty	3-year limited warranty on parts, labor and backlight, onsite warranty
Recycle/Disposal	Please dispose of in accordance with local, state or federal laws.
Package Contents	IFP7550 display, stylus pen x 2, power cable, HDMI cable, USB cable, remote control with batteries, Camera plate, M8 screw x 8, Quick Start Guide
Regulations	cTUVus, FCC, ENERGY STAR, Mexico Energy, CE, CB, RoHS, ErP, WEEE
Ethernet LAN	(10/100/1000M) (Android 10/100, PC 10/100/1000)
Display Type	LCD
Screen Size	75
Viewable Area (in.)	74.5
Light Source	LED
Display Resolution	3840 x 2160
Refresh Rate	60Hz
Aspect Ratio	16:9
Static Contrast Ratio	1,200:1
Dynamic Contrast Ratio	5,000:1
Backlight Life (Hours)	50,000
Brightness	350 cd/m2
Response Time (Typical GTG)	8ms
Viewing Angles	178° horizontal, 178° vertical
Panel Surface	9H
Operation Rating	16/7

UPC: 766907002478

