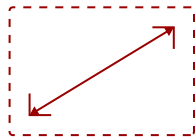


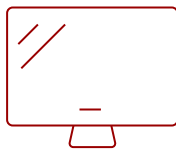
M2W - HIGH BRIGHTNESS PORTABLE SMART LED PROJECTOR WITH HARMAN KARDON SPEAKERS

Key Features

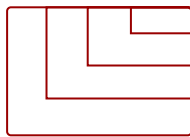
- Ultra-portable WXGA (1280x800) LED projector with 1,700 LED lumens and 1.2 throw ratio
- 125% Rec. 709 color accuracy and 3D Blu-ray/3D Ready produces lifelike colors
- Built-in dual Harman Kardon Bluetooth speakers deliver room-filling audio
- Get set up in seconds with auto-focus and horizontal/vertical keystone correction
- Livestream sporting events, binge shows on Netflix or Disney+ by adding a dongle (not included)
- Supports most media players, PCs, Macs, and mobile devices with inputs such as Wi-Fi, HDMI, USB-C



24"-150"
DISPLAY



PANEL



VGA(640 x 480) to 1080P (1920X1080)
RESOLUTION



TRUE-TO-LIFE COLORS

Product Description

The M2W is a HD ready portable smart LED projector boasting 1,700 LED Lumens, allowing you to enjoy big-screen fun wherever you go without sacrificing brightness. Setup is effortless with instant auto focus and side projection capabilities with H/V keystone and 4 corner correction. Its ultralight portable design and powering on by power bank ability provide you cinematic experiences on the go. Combining perfect images with lifelike colors covering 125% Rec.709 supported by ViewSonic's industry-leading LED technology and exceptional sound quality through Harman Kardon-customized speakers, the M2W delivers a true feast for the eyes and ears. Add even more fun with smart connectivity features such as Wi-Fi for wireless screen mirroring to get your phone up on the big screen, Bluetooth for alternative audio options, and USB-C for direct single-cable streaming from Nintendo® Switch.

Specifications

| | More Information |
|--|--|
| UPC | 766907016925 |
| Light Source | DLP LED |
| Display Resolution | WXGA (1280x800) |
| Display Resolution | 1280 x 800 |
| Brightness (Lumens) | 1700 LED (700 ANSI) |
| Screen Size | 24"-150" |
| Throw Distance | 0.50m-3.87m (100" @2.58m) |
| Throw Ratio | 1.2 |
| Keystone | Vertical (+/- 40°) / Horizontal (+/- 40°) |
| Lens | F=1.7, f=11.96mm Fixed Optical Zoom 0.8x-1.0x Digital Zoom |
| Light Source Life, Normal (hours) | 30000 |
| Color Depth | 1.07B Color (R/G/B 10bit) |
| Dynamic Contrast Ratio | 30,000,000:1 |
| Aspect Ratio | 16:10 |
| Input Lag | 37ms |
| Frequency Horizontal | 30K~97KHz |
| Frequency Vertical | 24~85Hz |
| PC Resolution (max) | VGA(640 x 480) to 1080P (1920X1080) |
| PC Resolution (min) | 640 x 480 |
| Mac® Resolution (max) | VGA(640 x 480) to (1920X1080) |
| Mac® Resolution (min) | 640 x 480 |
| USB 2.0 Type A | 1 |
| USB Type C | 1 |
| Card Reader | Micro SD |
| 3.5mm Audio Out | 1 |
| HDMI 1.4 (with HDCP 1.4) | 1 |
| Wifi | 5Gn |
| Bluetooth Audio-in | 4.2 |
| Bluetooth Audio-out | 4.2 |
| Internal Speakers | 3W (x2) |
| Voltage | Input: 100~240V Output: 19VDC / 4.74A |
| Consumption (typical) | 71W |
| Stand-by | <0.5W |

| | |
|----------------------------------|--|
| Physical Controls | Power |
| On Screen Display | Display, Image, Power Management, Basic, Advanced, System, Information (See user guide for full OSD functionality) |
| Temperature | 32-104° F (0 - 40° C) |
| Humidity (non-condensing) | 0-90% |
| Kensington Lock Slot | 1 |
| Net (lbs) | 3lbs |
| Gross (lbs) | 6.9lbs |
| Net (kg) | 1.35kg |
| Gross (kg) | 3.12kg |
| Packaging (in.) | 11.4x11x6.6in |
| Physical (in.) | 8.9x8.9x2.2in |
| Packaging (mm) | 290x280x168mm |
| Physical (mm) | 225x225x57mm |
| Regulations | FCC, cTUVus, ROHS |
| Package Contents | Projector, power cable, remote control, Quick Start Guide |
| Warranty | Three-year limited warranty on parts, labor and backlight |
| Recycle/Disposal | Please dispose of in accordance with local, state or federal laws. |
| Portability | Portable |

UPC: 766907016925

